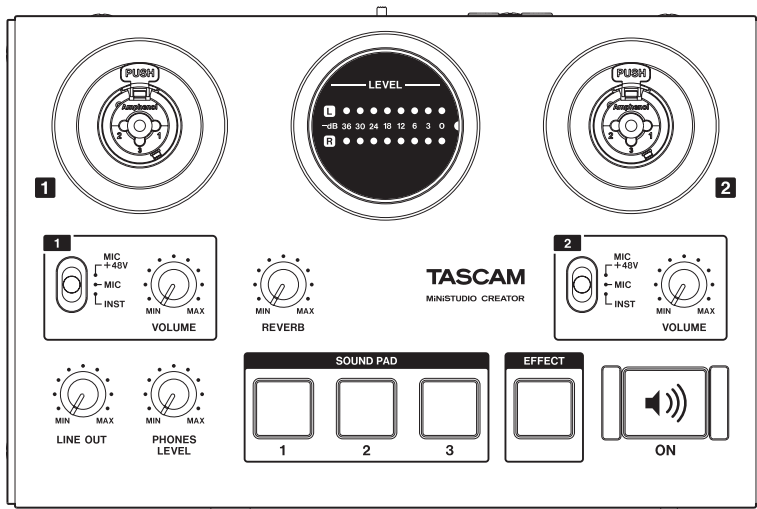


TASCAM

D01377020C

MINI STUDIO CREATOR US-42B

OWNER'S MANUAL



IMPORTANT SAFETY INSTRUCTIONS

For U.S.A.

INFORMATION TO THE USER

This equipment has been tested and found to comply with the limits for a Class B digital device, pursuant to Part 15 of the FCC Rules. These limits are designed to provide reasonable protection against harmful interference in a residential installation. This equipment generates, uses, and can radiate radio frequency energy and, if not installed and used in accordance with the instruction manual, may cause harmful interference to radio communications. However, there is no guarantee that interference will not occur in a particular installation. If this equipment does cause harmful interference to radio or television reception, which can be determined by turning the equipment off and on, the user is encouraged to try to correct the interference by one or more of the following measures.

- Reorient or relocate the receiving antenna.
- Increase the separation between the equipment and receiver.
- Connect the equipment into an outlet on a circuit different from that to which the receiver is connected.
- Consult the dealer or an experienced radio/TV technician for help.

CAUTION

Changes or modifications to this equipment not expressly approved by TEAC CORPORATION for compliance could void the user's authority to operate this equipment.

For Canada

THIS CLASS B DIGITAL APPARATUS COMPLIES WITH CANADIAN ICES-003.

CET APPAREIL NUMÉRIQUE DE LA CLASSE B EST CONFORME À LA NORME NMB-003 DU CANADA.

Declaration of Conformity

Responsible party: TEAC AMERICA, INC.
Address: 10410 Pioneer Blvd. Suite #1,
Santa Fe Springs, California
90670, U.S.A.

Telephone number: 1-323-726-0303

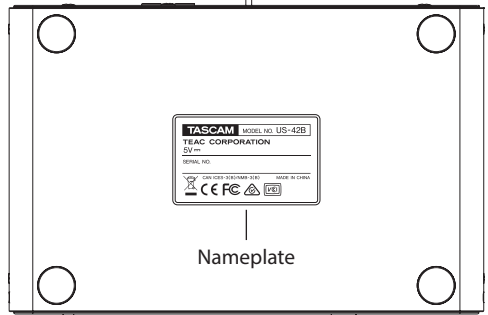
This device complies with Part 15 of the FCC Rules. Operation is subject to the following two conditions: (1) this device may not cause harmful interference, and (2) this device must accept any interference received, including interference that may cause undesired operation.



This product complies with the European Directives request and the other Commission Regulations.



This product complies with applicable UK regulations.



- Read these instructions.
- Keep these instructions.
- Heed all warnings.
- Follow all instructions.
- Do not use this apparatus near water.
- Clean only with dry cloth.
- Do not block any ventilation openings. Install in accordance with the manufacturer's instructions.
- Do not install near any heat sources such as radiators, heat registers, stoves, or other apparatus (including amplifiers) that produce heat.
- Do not defeat the safety purpose of the polarized or grounding-type plug. A polarized plug has two blades with one wider than the other. A grounding type plug has two blades and a third grounding prong. The wide blade or the third prong are provided for your safety. If the provided plug does not fit into your outlet, consult an electrician for replacement of the obsolete outlet.
- Protect the power cord from being walked on or pinched particularly at plugs, convenience receptacles, and the point where they exit from the apparatus.
- Only use attachments/accessories specified by the manufacturer.

- 12 Use only with the cart, stand, tripod, bracket, or table specified by the manufacturer, or sold with the apparatus. When a cart is used, use caution when moving the cart/apparatus combination to avoid injury from tip-over.
- 13 Unplug this apparatus during lightning storms or when unused for long periods of time.
- 14 Refer all servicing to qualified service personnel. Servicing is required when the apparatus has been damaged in any way, such as power-supply cord or plug is damaged, liquid has been spilled or objects have fallen into the apparatus, the apparatus has been exposed to rain or moisture, does not operate normally, or has been dropped.
- The apparatus draws nominal non-operating power from the AC outlet with its POWER or STANDBY/ON switch not in the ON position.
 - The mains plug is used as the disconnect device, the disconnect device shall remain readily operable.
 - Caution should be taken when using earphones or headphones with the product because excessive sound pressure (volume) from earphones or headphones can cause hearing loss.
 - If you are experiencing problems with this product, contact TEAC for a service referral. Do not use the product until it has been repaired.



■ For European Customers

Disposal of electrical and electronic equipment

- All electrical and electronic equipment should be disposed of separately from the municipal waste stream via designated collection facilities appointed by the government or the local authorities.
- By disposing of the electrical and electronic equipment correctly, you will help save valuable resources and prevent any potential negative effects on human health and the environment.
- Improper disposal of waste equipment can have serious effects on the environment and human health as a result of the presence of hazardous substances in electrical and electronic equipment.
- The crossed out wheeled dust bin symbol indicates that electrical and electronic equipment must be collected and disposed of separately from household waste.
- The return and collection systems are available to the end users. For more detailed information about disposal of old electrical and electronic equipment, please contact your city office, waste disposal service or the shop where you purchased the equipment.



CAUTION

- Do not expose this apparatus to drips or splashes.
- Do not place any objects filled with liquids, such as vases, on the apparatus.
- Do not install this apparatus in a confined space such as a book case or similar unit.
- The apparatus should be located close enough to the AC outlet so that you can easily grasp the power cord plug at any time.
- If the product uses batteries (including a battery pack or installed batteries), they should not be exposed to sunshine, fire or excessive heat.
- CAUTION for products that use replaceable lithium batteries: there is danger of explosion if a battery is replaced with an incorrect type of battery. Replace only with the same or equivalent type.

Contents

IMPORTANT SAFETY INSTRUCTIONS.....	2
Introduction.....	4
Features.....	4
Included items.....	5
Conventions used in this manual.....	5
Trademarks and copyrights.....	5
Precautions for placement and use.....	5
Using the TEAC Global Site.....	6
Beware of condensation.....	6
Cleaning the unit.....	6
Product registration.....	6
About TASCAM customer support service.....	6
Broadcasting live.....	6
Names and functions of parts.....	8
Top panel.....	8
Front panel.....	9
Rear panel.....	10
Installing the dedicated software.....	10
Installing the Windows software.....	10
Installing the Mac software.....	11
Working with Gatekeeper.....	12
Connecting the power.....	13
When using a computer (Windows/Mac).....	13
When using an iOS device.....	13
Connection illustrations.....	13
Connecting with a computer.....	14
Connecting iOS devices.....	14
Audio connections.....	14
Opening the Settings Panel.....	15
Windows.....	15
Mac.....	15
Settings Panel overview.....	15
Using the Settings Panel menu bar.....	15
EASY page.....	17
EXPERT page.....	18
Driver settings for specific purposes (Windows only).....	21
Creating podcasts (Windows only).....	21
Using the ducking function.....	22
Notification function.....	22
Automatic Settings Panel and firmware update function.....	22
Application Guide.....	23
Windows.....	23
macOS.....	23
Troubleshooting.....	24
Specifications.....	25
Ratings.....	25
Analog audio input ratings.....	25
Analog audio output ratings.....	25
Control input/output ratings.....	26
Audio performance.....	26
Operation requirements.....	26
Windows.....	26
Mac.....	26
iOS device.....	26
Supported audio drivers.....	26
General.....	27
Dimensional drawings.....	27
Block diagrams.....	28

Introduction

Thank you very much for purchasing the TASCAM MiNiSTUDIO CREATOR.

Before using this unit, read this Owner's Manual carefully so that you will be able to use it correctly and enjoy working with it for many years. After you have finished reading this manual, please keep it in a safe place for future reference.

You can also download this Owner's Manual from the TEAC Global Site (<https://teac-global.com/>).

Before connecting this unit to a computer, you must download and install dedicated software on the computer.

Features

The MiNiSTUDIO series of personal audio interfaces are designed to make Internet broadcasting of audio performances easy.

The MiNiSTUDIO CREATOR, which is an advanced model in the MiNiSTUDIO series, supports both live broadcasting and production applications as well as the simultaneous use of two mics. Users can enjoy streaming and production with advanced features.

- Audio interface designed specifically for live Internet broadcasting with support for not only Windows, but also Mac and iOS
- Sound effect triggering (SOUND PAD) function, voice effects and reverb enable many audio performance possibilities
- Easily-operated user interface designed for Internet broadcasting
- Two input jacks support various applications including performances with vocals and guitar and interview programs
- CREATOR mode is optimal for creating video contents and music.

■ Note about computer operation

If you are unsure about anything related to the basic operation of a computer when it is mentioned in an explanation in this manual, please refer to the computer operation manual.

To use this unit with a computer, dedicated software must be installed on the computer.

For details about software installation, see "Installing the dedicated software" on page 10.

Included items

This product includes the following items.

Take care when opening the package to avoid damaging the items. Keep the box and packing materials for transportation in the future.

Please contact the store where you purchased this unit if any of these items are missing or have been damaged during transportation.

- Main unit × 1
- USB cable × 1
- Owner's Manual (this document)..... × 1

The warranty is included at the end of this manual.

Conventions used in this manual

In this manual, we use the following conventions:

- Buttons, connectors and other physical parts of this unit are written using a bold font like this: **VOLUME** knob.
- Information shown on a computer display is written like this: "OK".
- Additional information is provided as necessary as tips, notes and cautions.

TIP

These are tips about how to use the unit.

NOTE

These provide additional explanations and describe special cases.

CAUTION

Failure to follow these instructions could result in injury, damage to equipment or lost recording data, for example.

Trademarks and copyrights

- TASCAM and MiNiSTUDIO are registered trademarks of TEAC Corporation.
- Microsoft and Windows are either registered trademarks or trademarks of Microsoft Corporation in the United States and/or other countries.
- Apple, Mac, macOS, iPad and iPod touch are trademarks of Apple Inc.
- Lightning is a trademark of Apple Inc.
- App Store is a service mark of Apple Inc.
- IOS is a trademark or registered trademark of Cisco in the U.S. and other countries and is used under license.
- ASIO is a trademark of Steinberg Media Technologies GmbH.



- Other company names, product names and logos in this document are the trademarks or registered trademarks of their respective owners.

Precautions for placement and use

- The operating temperature range of this unit is 5–35 °C.
- Do not install this unit in the following types of locations. Doing so could make the sound quality worse or cause malfunction.
 - Places with significant vibrations
 - Near windows or other places exposed to direct sunlight
 - Near heaters or other extremely hot places
 - Extremely cold places
 - Places with bad ventilation or high humidity
 - Very dusty locations
- Do not place this unit on top of a power amplifier or other device that generates heat.

Using the TEAC Global Site

You can download updates for this unit from the TEAC Global Site:

- <https://teac-global.com/>

In the TASCAM Downloads section, select the desired language to open the Downloads website page for that language.

Beware of condensation

If the unit is moved from a cold to a warm place, or used after a sudden temperature change, there is a danger of condensation; vapor in the air could condense on the internal mechanism, making correct operation impossible. To prevent this, or if this occurs, let the unit sit for one or two hours at the new room temperature before using it.

Cleaning the unit

Use a dry soft cloth to wipe the unit clean. Do not wipe with chemical cleaning cloths, thinner, alcohol or other chemical agents. Doing so could damage the surface or cause discoloration.

Product registration

Customers in the USA, please visit the following TASCAM website to register your TASCAM product online.

<https://tascam.com/us/>

About TASCAM customer support service

TASCAM products are supported and warranted only in their country/region of purchase.

To receive support after purchase, on the TASCAM Distributors list page of the TEAC Global Site (<https://teac-global.com/>), search for the local company or representative for the region where you purchased the product and contact that organization.

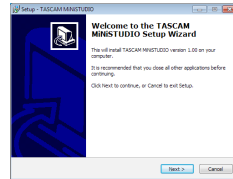
When making inquiries, the address (URL) of the shop or web shop where it was purchased and the purchase date are required.

Moreover, the warranty card and proof of purchase might also be necessary.

Broadcasting live

■ Computer preparation (installing the dedicated software)

1. Download the software for the operating system you are using from the TEAC Global Site (<https://teac-global.com/>) and follow the installer procedures to install it. See “Installing the dedicated software” on page 10 for details.

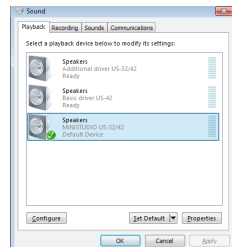


Installer screen

2. Make the following settings according to the computer you are using.

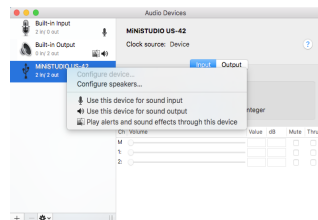
Windows

Open the Sound Control panel and set “MiNiSTUDIO US-32/42” as the Default Device on both the Playback and Recording tabs. (See “Windows” on page 23.)



Mac

Open the Utilities folder in the Applications folder, and double-click “Audio MIDI Setup”. Then, set “MiNiSTUDIO US-42” to “Use this device for sound input” and “Use this device for sound output”. (See “macOS” on page 23.)

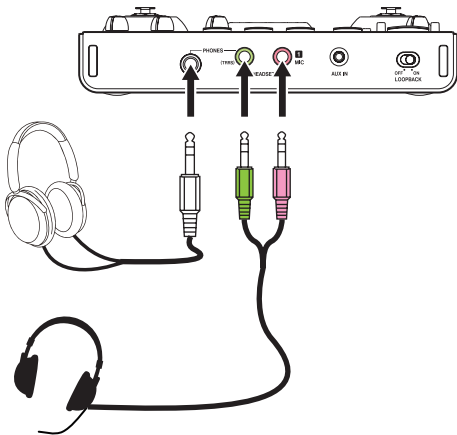


■ Setting up the unit

NOTE

For details about the **IN** jack (①) and other parts, see “Top panel” on page 8 and “Front panel” on page 9.

- Set the **LOOPBACK** switch (⑱) to **ON**.
- Confirm that the **IN** jack **VOLUME** knob (④) is set to **MIN** before connecting a mic.
 - Connect a condenser or dynamic mic to the **IN** jack (①).
 - When using 4-pole headphones with a built-in mic, connect it to the **PHONES (TRRS)** jack (⑯).
 - When using the headset, connect the headphone plug to the **PHONES (TRRS)** jack (⑯) and the mic plug to the **MIC** jack (⑰).



- Set the mic type switch (⑤) for the **IN** jack (①) according to the type of mic connected to it as follows.
 - MIC +48V** Condenser mic (mic that requires power)
 - MIC** Dynamic mic (mic that does not require power)

NOTE

When using 4-pole headphones with a built-in mic or a headset, you can set this to either **MIC +48V** or **MIC**.

- Say or sing something, and turn the **IN** jack **VOLUME** knob (④) until the **LEVEL** meter (②) lights green.
- Confirm that the headphone knob (⑥) is set to **MIN**, and connect headphones to the headphone jack (⑯).

When using this unit for a live broadcast, in order to prevent feedback (signal looping), use headphones or an earphone instead of speakers.

- If you want to apply reverb to your voice, turn the **REVERB** knob (⑩).
- Press the **ON** button (⑬) so that it lights to complete preparation.

Audio will start being sent to the computer, so make the settings in the streaming software to start streaming.

Start live broadcasting.

CAUTION

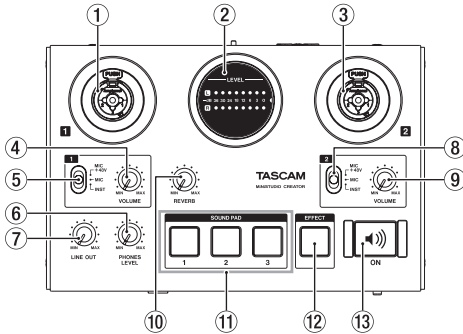
Refer to the help pages of the streaming software to make various settings in it.

Refer to the following pages to use the other functions of this unit.

Desired action	Page
Use voice effects	page 17 page 18
Play background music on the computer	page 23
Play sound effects (SOUND PAD function)	page 17 page 18
Use with an iOS device (connecting)	page 13
Use with an iOS device (powering)	page 13
Use music on a tablet or other connected device	page 9, ⑱
Using the unit as an audio interface (music and video creation)	page 9, ⑲

Names and functions of parts

Top panel



① IN 1 jack (BALANCED/UNBALANCED)

This XLR/TRS combo jack is an analog input. It supports high impedance input, including direct guitar input.

- XLR (1: GND, 2: HOT, 3: COLD)

- TRS (Tip: HOT, Ring: COLD, Sleeve: GND)

Use the **IN 1 VOLUME** knob (④) to set the input level.

Use the **IN 1** jack input switch (⑤) to enable balanced line input (**MIC +48V / MIC**) or unbalanced input (**INST**) for the TRS jack.

When directly connecting a guitar, bass or other instrument, set the **IN 1** jack input switch (⑤) to **INST**.

② LEVEL meters

These show the levels of the analog input signals.

When a signal is being input, this lights yellow when the level is too low or too high, green when the level is good and red when the signal is distorting.

③ IN 2 jack (BALANCED/UNBALANCED)

This XLR/TRS combo jack is an analog input. It supports high impedance input, including direct guitar input.

- XLR (1: GND, 2: HOT, 3: COLD)

- TRS (Tip: HOT, Ring: COLD, Sleeve: GND)

Use the **IN 2 VOLUME** knob (⑨) to set the input level.

Use the **IN 2** jack input switch (⑧) to enable balanced line input (**MIC +48V / MIC**) or unbalanced input (**INST**) for the TRS jack.

When directly connecting a guitar, bass or other instrument, set the **IN 2** jack input switch (⑧) to **INST**.

④ IN 1 VOLUME knob

Use to adjust the input levels from the **IN 1** jack (①) on the top of the unit, as well as from the mic input for 4-pole headphones with a built-in mic (⑯) and the headset jack mic input (⑰).

CAUTION

The **IN 1** jack (①) on the top of the unit, the mic input for 4-pole headphones with a built-in mic (⑯), and the headset jack mic input (⑰) cannot be used at the same time.

⑤ IN 1 jack input switch

Set according to the input source of the **IN 1** jack (①) on the top of the unit.

MIC +48V Mic (phantom power on, +48V)

MIC Mic (phantom power off)

INST Instrument

NOTE

- When using 4-pole headphones with a built-in mic or a headset, you can set this to either **MIC +48V** or **MIC**.
- Phantom power is not output through the TRS jack.

⑥ PHONES LEVEL knob

Use to adjust the output level from the headphones jack (⑮) and the headphone outputs for the 4-pole headphones with a built-in mic jack (⑰).

CAUTION

Before connecting headphones, minimize the headphones knob (⑥). Failure to do so could result in a sudden loud noise that could harm hearing, for example.

⑦ Line output knob

Use to adjust the output level of the **LINE OUT L/R** jacks (⑳) on the back of the unit.

⑧ IN 2 jack input switch

Set according to the input source of the **IN 2** jack (③) on the top of the unit.

MIC +48V Mic (phantom power on, +48V)

MIC Mic (phantom power off)

INST Instrument

NOTE

Phantom power is not output through the TRS jack.

⑨ IN 2 VOLUME knob

Use to adjust the input level of the **IN 2** jack (③) on the top of the unit.

- ⑩ **REVERB knob**
This knob adjusts the depth of the reverb effect. When set all the way to **MIN**, no reverb will be used and the signal will be 100% dry. When set all the way to **MAX**, the signal will be 100% wet. Use the Settings Panel to set the reverb type and parameters. (See “Settings Panel overview” on page 15.)

- ⑪ **SOUND PAD trigger pads (1/2/3)**
Press these pads to play sounds set in the Settings Panel.

Press them strongly to play sounds loudly and press them weakly to play sounds softly.

Use the Settings Panel to set the SOUND PAD trigger pad parameters. (See “Settings Panel overview” on page 15.)

- ⑫ **EFFECT button**
Use to turn the effect on/off for the sounds input from the **IN 1**/**IN 2** jacks on the top of the unit, as well as for the mic input for 4-pole headphones with a built-in mic (⑩) and the headset jack mic input (⑪) on the front of the unit.

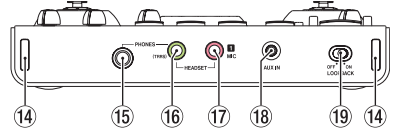
Set the effect type and parameters on the Settings Panel. (See “Settings Panel overview” on page 15.)

- ⑬ **ON button**
This turns audio transmission to the computer on and off.

If the **LOOPBACK** switch (⑭) is set to **ON**, when this is on, the button lights and the input sound (①, ③, ⑩, ⑪ and ⑫) and sound from the computer (sound of playback from audio applications, for example) are mixed and sent to the computer.

This is on by default after the **LOOPBACK** switch (⑭) is set to **OFF**.

Front panel



- ⑭ **Strap attachments**
- ⑮ **PHONES jack (stereo standard)**
Use this standard stereo jack to connect stereo headphones.
The same signals are output from the **LINE OUT L** and **R** jacks.
- ⑯ **PHONES (TRRS) jack (stereo mini)**
Connect stereo headphones to this stereo mini jack.
This unit supports input and output for 4-pole headphones with a mic and output for headset headphones.

CAUTION

Before connecting headphones, use the headphones knob (⑥) to minimize the volume. Failure to do so could result in a sudden loud noise that could harm hearing, for example.

- ⑰ **MIC jack (TS mini)**
Connect the mic plug of a headset to this TS mini jack.

CAUTION

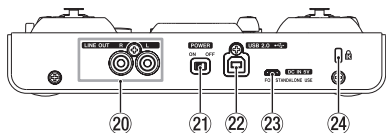
The **IN 1** jack (①) on the top of the unit, the mic input for 4-pole headphones with a mic (⑩), and the headset jack mic input (⑪) cannot be used at the same time.

If more than one of the above input jacks are connected at the same time, sound will only be input through the jack with the highest priority.

The priority of the jacks from highest to lowest is **PHONES (TRRS) jack (⑩)**, **MIC jack (⑰)**, **IN 1** jack (①).

- ⑱ **AUX IN jack (stereo mini)**
Background music can be played from a portable audio player or other external device with a line output jack connected using a stereo mini jack cable.
Use the output level setting of the connected device to adjust the input level.
- ⑲ **LOOPBACK switch**
Set this switch according to use. (See “Using the Settings Panel menu bar” on page 15.)

Rear panel



- ②0 **LINE OUT L/R jacks (UNBALANCED)**
These RCA pin jacks are analog line outputs.
- ②1 **POWER switch**
Use to turn the unit on and to put it into standby. When the unit is turned on, the **LEVEL** meters (②) light completely once.
- ②2 **USB 2.0 port**
Use the included USB cable to connect the unit to a computer. (Supports USB 2.0.)

CAUTION

- When using this unit connected to a computer, it will receive power from the computer's USB port. Depending on the computer, the USB port might not be able to supply enough power to operate the unit.
 - When connected to a USB 3.0 port, it will function in High Speed mode equivalent to USB 2.0 (480 Mbps maximum).
 - After waking a computer from suspend (sleep) mode, if the unit does not operate properly, turn it off and turn it on again or disconnect and reconnect the USB cable.
 - USB 1.1 is not supported.
- ②3 **DC IN 5V connector**
When connected to an iOS device or other equipment that cannot power this unit, you must use a USB power adapter, mobile battery or other power supply. See "When using an iOS device" on page 13 for details.
 - ②4 **Kensington Security Slot**

Installing the dedicated software

To use this unit with a computer, dedicated software must be installed on the computer.

Download the latest software for the operating system you are using from the TEAC Global Site (<https://teac-global.com/>).

- When you install the dedicated software on a Windows computer, the Windows driver and the Settings Panel application will be installed.
- When you install the dedicated software on a Mac, only the Mac Settings Panel application will be installed.
The standard OS driver will be used.
- When using this unit with an iOS device, the standard OS driver will be used, so there is no need to install dedicated software.

CAUTION

Before starting to install software, quit other applications.

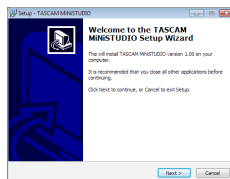
Installing the Windows software

CAUTION

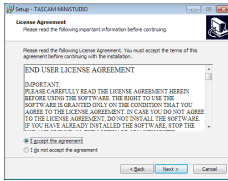
- Complete installation of the Windows software on the computer before connecting the unit to it with the USB cable.
- If you already connected the unit to the computer using the USB cable before installing the Windows software and the Found New Hardware Wizard launched, close the message and disconnect the USB cable.

■ Windows software installation procedures

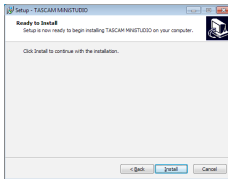
1. Download the latest Windows software for the operating system you are using from the TEAC Global Site (<https://teac-global.com/>) and save it on the computer to be used with the unit.
2. Open the saved Windows software (zip file) on, for example, the computer desktop.
3. Double-click the "TASCAM_MiNiSTUDIO_Installer_XXX.exe" (XXX is the version number) file in the folder that appears after uncompression to automatically launch the installation software.
4. When a "Security Warning" or "User Account Control" screens appear, click the "Yes" button.
5. When the InstallShield Wizard screen appears, click the "Next" button.



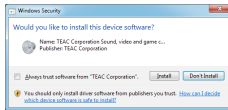
- Read the contents of the License Agreement, and select “I accept the terms in the license agreement” if you agree to the terms. Then, click the “Next” button.



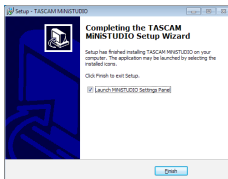
- Click the “Install” button.



- Click the “Install” button in the window that opens to start installation (Windows 8.1 / Windows 7).



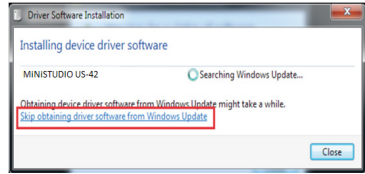
- The following screen appears when installation has completed. Click the “Finish” button.



- The installer will quit and the Windows Settings Panel will launch.

NOTE

After installing the software, the device driver will be installed the first time the unit is connected by USB. At this time, Windows will automatically search Windows Update, so it might take some time to recognize the unit connection. If the unit is still not recognized after some time, open the software installation screen from the message area at the bottom right of the computer display, and click “Skip Obtaining Drivers From Windows Update” to cancel the search.



Installing the Mac software

NOTE

- Install the Mac software on the computer before connecting the unit to it with the USB cable.
- Depending on the Gatekeeper setting, a warning message might appear during installation. See “Working with Gatekeeper” for information about Gatekeeper.

Mac software installation procedures

- Download the latest software for the operating system you are using from the TEAC Global Site (<https://teac-global.com/>) and save it on the computer to be used with the unit.
- Double-click “TASCAM_MINI STUDIO Installer_XXX.dmg” (XXX is the version number), which is the saved disk image file for the Mac software, and double-click “MiniStudio Installer.pkg” inside the folder that opens.

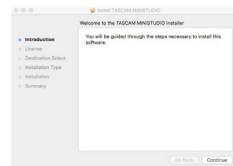


MINI STUDIO_Installer.pkg

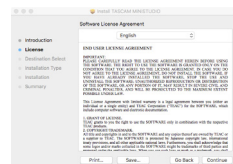
NOTE

Depending on the computer’s settings, the downloaded zip file might not have opened automatically. In this case, open the zip file first and then double-click the disk image file.

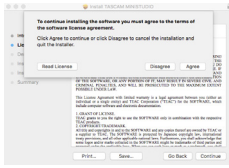
- When the installer starts, click the “Continue” button.



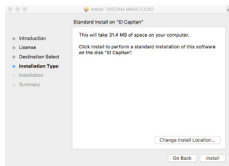
- Next, select the desired language and click the “Continue” button.



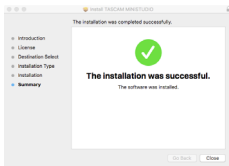
- Click the “Read License” button and check the contents of the Software License Agreement. If you agree to the contents, click “Agree”. Then, click the “Next” button.



- Click the “Install” button in the window that opens to start installation.



- The following screen appears when installation has completed. Click the “Close” button.



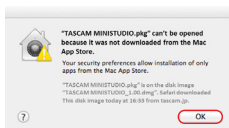
Working with Gatekeeper

When using macOS, depending on the Gatekeeper security function setting, a warning message might appear during installation.

The solution depends on the warning message shown. See the following explanations for details.

- When the Gatekeeper setting is “Allow applications downloaded from: the Mac App Store”

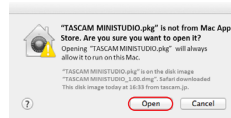
The following security warning might be shown: “MiNiSTUDIO_Installer.pkg” can’t be opened because it was not downloaded from the Mac App Store.”



In this case, click the “OK” button to close the message. Then, control-click (or right-click) the file and click “Open”.

When the “MiNiSTUDIO_Installer.pkg” can’t be opened because it was not downloaded from the

Mac App Store. Are you sure you want to open it?” security warning message appears, click the “Open” button.



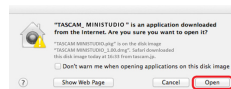
This warning message might also appear when the Gatekeeper setting is something other than “Allow applications downloaded from: the Mac App Store.” The file still might not open and “MiNiSTUDIO_Installer.pkg” can’t be opened because it was not downloaded from the Mac App Store.” might appear again.



In this case, copy the file from the folder where it is to the desktop or another folder, and then open it. Alternatively, change the Gatekeeper settings to “Allow applications downloaded from: the Mac App Store and identified developers” and try opening it again.

- When the Gatekeeper setting is not “Allow applications downloaded from: the Mac App Store”

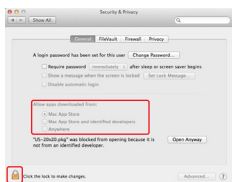
“MiNiSTUDIO_Installer.pkg” is an application downloaded from the Internet. Are you sure you want to open it?” might appear as a security warning message. In this case, click the “Open” button.




- Changing the Gatekeeper setting

The Gatekeeper setting can be changed using the “Allow applications downloaded from:” item on the “General” page of the “Security & Privacy” pane of the System Preferences.

To change this, you must click the lock icon (🔒) at the bottom left and enter a password to unlock the settings.



This setting will lock again when you click the  button or type command-Q to close the System Preferences or when you click “Show All” to close the open pane.

CAUTION

Changing the Gatekeeper setting could result in security risks.

If you changed the Gatekeeper setting to decrease security (use one of the lower settings), set it back to the original setting after updating the software and/or firmware. (When installing a firmware update immediately after software, do this after installing the firmware update.)

Connecting the power

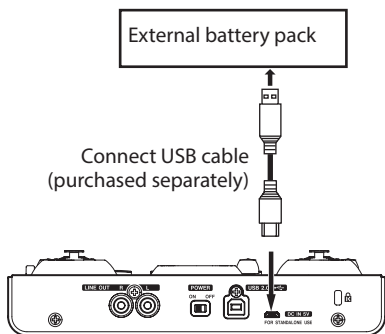
When using a computer (Windows/Mac)

Normally, when this unit is connected to a computer, it will operate using USB bus power, so connecting a separate power supply device is not necessary.

When using an iOS device

When this unit is connected to an iOS device, connecting an external battery, USB power adapter or other power supply device is necessary in order to power the unit.

Connect an external battery pack (TASCAM BP-6AA) or the USB power adapter included with the iPad or iPhone to a USB cable (sold separately), and connect it to the **DC IN 5V** port.



CAUTION

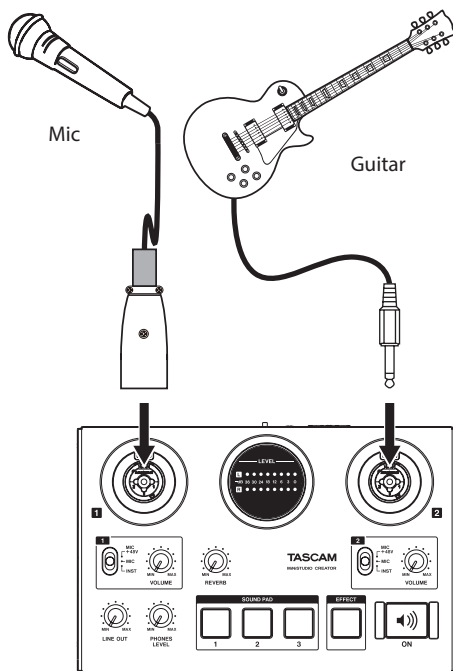
- No USB power adapter is included with an iPod touch. To use it with an iPod touch, purchase a genuine Apple USB power adapter (that can supply 5 V and a current of at least 700 mA) separately.

- Operation with other external battery packs and USB power adapters is possible, but we strongly recommend using a TASCAM BP-6AA external battery pack or the genuine Apple USB power adapter included with the iPad/iPhone. When using another external battery pack or USB power adapter, be sure that the power supply device meets the following specifications.

- Supplied voltage: 5 V
- Supplied current: 700 mA or more

Using a power supply device when the specifications are other than the above could cause malfunction, overheating, fire or other problems. If anything abnormal occurs, stop use and contact the retailer where you purchased the unit or a TASCAM customer support service to request repair.

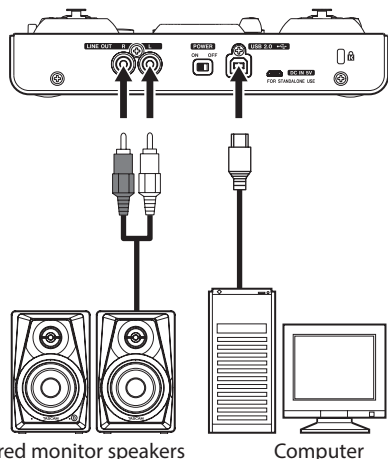
Connection illustrations



Examples of connections to a MiNiSTUDIO (top)



Examples of connections to a MiniSTUDIO (front)



Examples of connections to a MiniSTUDIO (back)

Connecting with a computer

Use the included USB cable to connect the unit to a computer USB 2.0/3.0 port.

When the power is on, you can check the Settings Panel Device item to confirm whether a USB connection is working.

CAUTION

If you connect this unit to a computer via a USB hub, for example, audio signal dropouts, clicking noises and other interference could occur due to the influence of other USB devices connected to that hub. For this reason, we strongly recommend connecting this unit to a separate USB port. Connecting USB keyboards and mice, however, to the same bus should not be a problem.

Connecting iOS devices

You will need a Lightning to USB Camera Adapter and the USB cable included with this unit to connect an iOS device.

Audio connections

Analog audio signals input into this device from mics and other audio equipment can be converted into digital signals and sent to the computer via USB.

In addition, by connecting speakers (through an amplifier if not powered) or headphones to this unit, you can monitor audio signals that are input to this unit and output from the computer.

CAUTION

Before connecting audio equipment, set the unit's **VOLUME** (④, ⑨), **line output** (⑦) and **headphones** (⑥) knobs to their lowest values. Failure to do so could cause sudden loud noises from monitoring equipment, and this could damage the equipment or harm hearing.

■ Connecting microphones

Dynamic mics

Set the **IN 1/IN 2** jack input switches (⑤, ⑧) to **MIC**, and connect the mics to the **IN 1/IN 2** jacks (①, ③) on the top of the unit.

Condenser mics

When using a condenser microphone that requires phantom power, connect it to the **IN 1** or **IN 2** XLR jack (① or ③), and then set the corresponding input switch (⑤ or ⑧) to **MIC +48V**.

CAUTION

- Before making connections, turn off this unit and all connected devices (excluding computers/iOS devices) to be connected (or put them into standby).
- Do not set the **IN 1/IN 2** jack input switch (⑤ or ⑧) to **MIC +48V** (phantom power on) when connecting a mic that does not require phantom power.
- Turning phantom power on when a dynamic mic or other mic that does not require it is connected could damage this unit and connected equipment.
- Do not connect or disconnect mics while phantom power is on. Doing so could cause a loud noise and might damage this unit and connected equipment.

Set the **VOLUME** (④, ⑨) and **headphones** (⑥) knobsto their minimum values before turning phantom power on/off. Depending on the connected mics, sudden loud noises from monitoring equipment could occur, and this could damage the equipment or harm hearing.

- Supplying phantom power to some ribbon mics will break them. If you are unsure, do not supply phantom power to a ribbon mic.

- If you connect this unit to a laptop computer that is running on battery power and set the **IN 1/IN 2** jack input switch (⑤ or ⑧) to **MIC +48V**, the computer battery charge will be used more quickly.

■ Connecting guitars

When connecting a guitar or bass guitar directly to this unit, use the **IN 1** or **IN 2** jack (① or ③) on the top of the unit and set the switch for that jack (⑤ or ⑧) to **INST**.

■ Connecting other audio equipment

Connect other audio equipment to the external input jack (⑱) on the front of the unit.

Use the output level setting of the connected device to adjust the input level.

■ Connecting monitor speakers

Connect monitor speakers (powered speakers with unbalance connections) to the **LINE OUT L/R** jacks on the back of the unit.

Use the line output knob (⑦) on the top of the unit to adjust the speaker volume.

■ Connecting headphones

Connect headphones to a headphones jack (standard stereo jack (⑮) or stereo mini jack (⑯)) on the front of the unit.

NOTE

The same signals are output from both the standard stereo jack and the stereo mini jack.

CAUTION

Before connecting headphones, use the headphones knob (⑥) to minimize the volume. Failure to do so could result in a sudden loud noise that could harm hearing, for example.

Opening the Settings Panel

You can use the Settings Panel to make settings for the various functions of this unit. You can also check the versions of the firmware and software used by the unit. You can open the Settings Panel in the following ways.

Windows

Windows 10

- From the Start menu select "**MiNiSTUDIO Settings Panel**" under "**TASCAM**".

Mac

- Using the Finder, open the Applications folder and click "**MiNiSTUDIO Settings Panel**" to open the Settings Panel.

Settings Panel overview

The Settings Panel has two tabbed pages.

Click a tab at the top of the Settings Panel to open that page.

- **EASY**: This shows the current status of the driver and information about connections. You can also make various basic settings.
- **EXPERT**: Make settings for the built-in mixer and effects, for example, on this page.

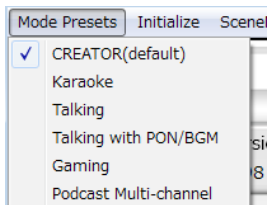
NOTE

When you open the Settings Panel, it will open in the same state as when last closed.

Using the Settings Panel menu bar

Click "Mode Presets", "Initialize", "Scene Memory" or "Extra Effects" at the top left of the menu bar on either the "EASY" or "EXPERT" tab of the Settings Panel to open the corresponding menu screen.

■ Mode Presets (Windows only)



Set the **LOOPBACK** switch on the unit to **OFF** to use this.

• CREATOR (default)

The settings of this preset are suitable when using commercially-available DAW software, for example.

• Karaoke

The settings of this preset are suitable for Internet karaoke, for example.

Set **ASIO** to "ON" in the Settings Panel if you want to use compatible VST plug-ins to add echo or other effects.

When using the MiNiSTUDIO built-in effects, set **ASIO** to "OFF" in the Settings Panel.

• Talking

The settings of this preset are for talking using ordinary Internet audio/video communication applications, for example.

• Talking with PON/BGM

The settings of this preset are for talking using ordinary Internet audio/video communication applications, for example, while using the built-in **SOUND PAD** function or playing background music from an audio application or another application.

• Gaming

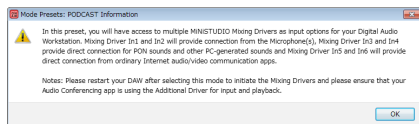
The settings of this preset are for live streaming of game play while talking to other players in games that support voice chat.

• Podcast Multi-channel

The number of ASIO input channels has been increased to six.

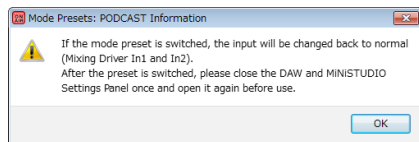
In addition to the Mic inputs (Mixing Driver In1/2), the output of the “MINISTUDIO US-32/42” Windows Driver can be assigned to Mixing Driver In3/4 and the output of the “Additional driver US-32/42” can be assigned to Mixing Driver In5/6.

When using a DAW, different audio can be recorded to separate tracks, and adjustments can be made independently, allowing you to easily create podcast materials. (See “Creating podcasts (Windows only)” on page 21.)

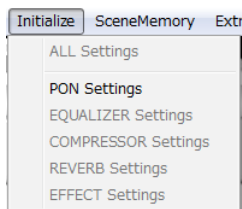


NOTE

As before, only Mixing Driver In1/2 can be used with mode presets other than Podcast Multi-channel. When switching to or from a different mode preset, the ASIO application must be restarted and audio settings updated. The Settings Panel must also be restarted.



■ Initialize



The Settings Panel will be set as follows.

• ALL Settings

The EQUALIZER, COMPRESSOR, REVERB, EFFECT and SOUND PAD settings will be set to their default values, SOUND PAD LATCH will be turned on, and nothing will be assigned as the SOUND PAD sound source.

• PON Settings

SOUND PAD LATCH is set to ON and SOUND PAD sound sources are set as follows.

SOUND PAD 1: NO!!

SOUND PAD 2: YES!!

SOUND PAD 3: APPLAUSE!

• EQUALIZER Settings

Initialize the EQUALIZER settings.

• COMPRESSOR Settings

Initialize the COMPRESSOR settings.

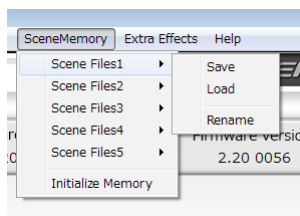
• REVERB Settings

Initialize the REVERB settings.

• EFFECT Settings

Initialize the EFFECT settings.

■ Scene Memory



A maximum of five scenes can be saved. The name of each scene can be changed as desired by using the “Rename” submenu item.

• Scene Files 1–5 items

Use to save the current Settings Panel settings as a scene memory.

Five scene memories have been prepared in advance.

• Initialize Memory item

Use to clear all five scene memories.

For details, see “Resetting all scene memories” on page 16.

NOTE

The “BUFFER SIZE” item on the EXPERT page is not saved.

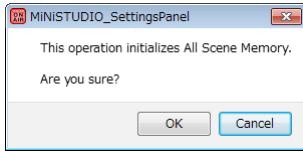
Resetting all scene memories

You can clear the five scene memories.

CAUTION

After resetting, you cannot restore the previous settings.

1. In the menu bar, open the “Scene Memory” menu, and click “Initialize Memory”.
2. The following confirmation message, which explains that all scene memories will be reset, will appear.

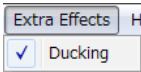


3. Click the “OK” button to reset all the scene memories.

NOTE

Click the “Cancel” button to return to the Settings Panel without initializing the five scene memories.

■ Extra Effects



- Ducking
Open the ducking setting screen where the ducking function can be set. (See “Using the ducking function” on page 2.)

- 2 **MIC 1/MIC 2 tabs**
Use these to switch between showing the SOUND and EFFECT controls for the MIC 1 (1, 16, 17) input jacks and the MIC 2 input jack (3).

- 3 **SOUND area**
Use this to select a preset sound quality to apply to the signals input through the inputs (1, 3, 16 and 17).
The indicator lights for the selected sound quality.

Options: Soft Vocal, Hard Vocal, OFF, Hard Spoken, Soft Spoken, EXPERT

NOTE

If the “EXPERT” is selected, the Compressor and Equalizer settings on EXPERT page would be assigned.

- 4 **EFFECT area**
Use this to select a preset effect to apply to the signals input through the inputs (1, 3, 16 and 17).
The indicator lights for the selected effect.

Options: RADIO, ECHO, MALE, FEMALE, CHOPPER, EXPERT

NOTE

If the “EXPERT” is selected, the EFFECT settings on EXPERT page would be assigned.

- 5 **REVERB area**
Use this to select a preset reverb to apply to the signals input through the inputs (1, 3, 16 and 17).
The indicator lights for the selected reverb.

Options: HALL, ROOM, LIVE, STUDIO, PLATE, EXPERT

NOTE

If the “EXPERT” is selected, the REVERB settings on EXPERT page would be assigned.

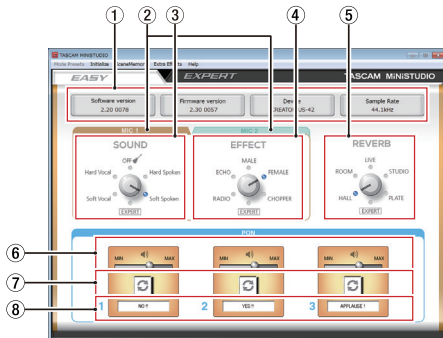
- 6 **Triggered sound output volume sliders**
Use these to adjust the volume of triggered sounds.
Slide to MIN to mute or toward MAX to amplify the sound.

- 7 **Repeat buttons**
When a repeat button is on, the arrows light and the repeat function for the triggered sound is enabled.

- 8 **Triger sound status**
Drag and drop audio files to load them.

- When a SOUND PAD trigger pads (1/2/3) has an audio file loaded, the name of that file is shown in the trigger sound status area and it lights orange.
- When there is a problem with a loaded audio file, the name of that file is shown in the trigger sound status area but the area appears gray.
- When no audio file is loaded, the trigger sound status area appears gray.

EASY page



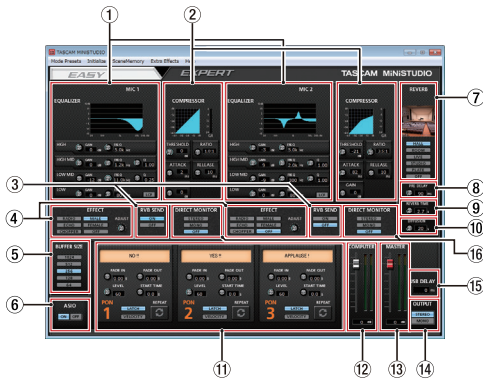
NOTE

Click buttons with the mouse to turn them on and off.

- 1 **Status area**
This shows the current status of the software.

Item displayed	Meaning
Software version	This is the software version.
Firmware version	This is the firmware version used by the connected unit.
Device	This shows the name of the connected unit. (“No Device” is shown when no device is connected.)
Sample Rate	This shows the sampling frequency.

EXPERT page



CAUTION

The **EQUALIZER**, **COMPRESSOR** and **REVERB** have no effect on the external input jack (18).

NOTE

- Use the mouse to click and drag parameter knobs up and down to adjust them.
- Click buttons with the mouse to turn them on and off.

1 EQUALIZER area

This unit has a 4-band equalizer (with HIGH, HIGH MID, LOW MID and LOW bands).

Use the equalizer to increase or decrease the levels of specific frequency ranges. This can be used, for example, to enhance the sound of individual instruments, to adjust the balance of a wide frequency range and to cut specific unwanted frequencies. (See “EQUALIZER (4-band parametric EQ) display area overview” on page 19.)

2 COMPRESSOR area

When the input volume exceeds the **THRESHOLD** level, the input volume is compressed, reducing output volume variation.

For example, by reducing the levels of loud sounds, lower level sounds become relatively louder, creating a more even volume level throughout and a more sustained sound. (See “COMPRESSOR display area overview” on page 20.)

NOTE

When the compressor is off, the compressor curve will appear but the meters will not be active.

3 RVB SEND display area

If a reverb type switches other than OFF is selected, the mic reverb can be turned on/off.

Options: ON (default), OFF

4 EFFECT area

Use this to select a preset effect to apply to the signals input through the inputs (1), (3), (16) and (17). Use the **BALANCE** knob to adjust the dry/wet signal balance. (See “EFFECT display area overview” on page 20.)

5 BUFFER SIZE setting area (Windows only)

The Windows driver for the unit stores the audio signals sent to and from the computer temporarily in a buffer. This buffer size can be adjusted. Smaller buffer sizes result in less audio signal delay (latency), but require high-speed processing by the computer.

If the processing cannot keep up, for example, due to other system operations, clicking and popping noises might occur and the audio signal might even drop out.

Increasing the buffer size will stabilize operation and suppress negative effects on audio signals, but the delay in audio signals sent to the computer will increase.

You can use the slider on the panel to adjust the buffer size, according to the use conditions. Use the slider to select fixed values that increase from left to right.

Options: 1024, 512, 256, 128, 64

6 ASIO setting area (Windows only)

This turns ASIO use on or off.

Turn this ON when using a plug-in that supports ASIO on signals being input to the unit.

Options: ON, OFF

CAUTION

If this is left ON when not using a plug-in that supports ASIO, input signals will not be output.

7 Reverb type switches

Use to select the type of reverb.

Depending on the type, the density and level of the reverb sound changes.

Options: HALL, ROOM, LIVE, STUDIO, PLATE, OFF

8 PRE DELAY knob

Set the amount of delay until the first reverberations. The larger the value, the larger the reverberations make the room sound.

Range: 0–250 ms

9 REVERB TIME knob

Set the amount of time that the reverberations continue.

The larger the value, the longer they continue.

Range: 0.1–10 s

10 DIFFUSION knob

Sets the breadth of the reverberations.

Range: 0–100

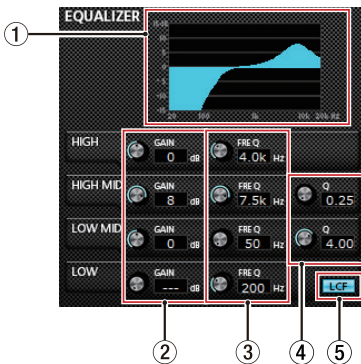
- ⑪ **Trigger sound area**
Make trigger sound settings here. (See “SOUND PAD trigger display area overview” on page 20.)
- ⑫ **COMPUTER fader**
Use this to adjust the amount of signal returned from the computer.
The adjusted value is shown below the fader.
- ⑬ **MASTER fader**
Use this to adjust the level of the output signal.
The adjusted value is shown below the fader.
- ⑭ **OUTPUT setting area**
Set whether the MASTER signal output is mono or stereo.
Options: STEREO, MONO
- ⑮ **USB DELAY setting area**
During live broadcasts, screen capture latency can result in timing differences between video and audio. By intentionally adding delay to the audio output by USB, you can correct this difference.
Range: 0 ms–2000 ms

NOTE

The USB DELAY setting cannot be used when the sampling frequency is 88.2 or 96 kHz.

- ⑯ **DIRECT MONITOR setting area**
Set whether the MASTER signal output is mono or stereo.
Options: STEREO, MONO, OFF

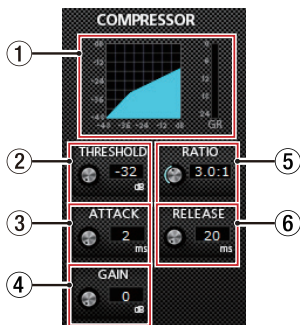
EQUALIZER (4-band parametric EQ) display area overview



- ① **EQ graph**
This shows the frequency response with the current equalizer settings.
The graph is shown even when the equalizer is off.
- ② **GAIN (HIGH/HIGH MID/LOW MID/LOW) knobs**
Set the amount the levels are increased or decreased for the HIGH, HIGH MID, LOW MID and LOW bands.
Range: ±12 dB (default: 0 dB)

- ③ **FREQ (HIGH/HIGH MID/LOW MID/LOW) knobs**
Set the cutoff frequencies of the HIGH, HIGH MID, LOW MID and LOW bands.
Ranges
HIGH: 1.7 kHz–18.0 kHz (default: 5 kHz)
HIGH MID: 32 Hz–18.0 kHz (default: 1.2 kHz)
LOW MID: 32 Hz–18.0 kHz (default: 300 Hz)
LOW: 32 Hz–1.6 kHz (default: 80 Hz)
- ④ **Q (HIGH MID/LOW MID) knobs**
Set the acutenesses of the peaks of the HIGH MID and LOW MID bands.
The higher the value the more acute it becomes, making it affect a narrower frequency band.
The lower the value, the less acute it becomes, making it affect a broader frequency band.
Ranges
HIGH MID: 0.25–16.00 (default: 1.00)
LOW MID: 0.25–16.00 (default: 1.00)
- ⑤ **LCF button**
Click the LCF button to enable a low cut filter that cuts noise and other sounds at low frequencies.
The LCF button lights when enabled. (Default: off)

■ COMPRESSOR display area overview



① Compressor status display

Three meters show the level of the signal input to the compressor (INPUT), the level of the signal output from the compressor (OUTPUT) and the gain reduction caused by the compressor (GR).

② THRESHOLD knob

Sets the threshold level that will cause the compressor to start.

Range: -32 dB-0 dB (default: 0 dB)

③ ATTACK knob

Sets the amount of time until the compression reaches the compression RATIO setting after the input volume exceeds the threshold.

Range: 2 ms-200 ms (default: 2 ms)

④ GAIN knob

Sets the gain of the output signal.

When the volume is compressed, the output level becomes lower than the input level. Use the GAIN knob to increase the output level so that it is close to the input level.

Range: 0 dB-20 dB (default: 20 dB)

⑤ RATIO knob

Sets the compression ratio for the input volume.

Turning it right raises the compression ratio, increasing the amount of compression.

Range: 1.0:1-inf:1 (default: 1.0:1)

⑥ RELEASE knob

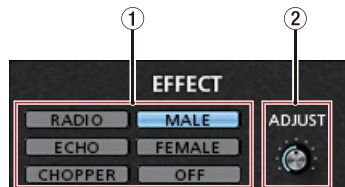
Sets the amount of time until the compression stops and the sound returns to its uncompressed level after the input sound goes below the threshold level.

Range: 10 ms-1000 ms (default: 10 ms)

NOTE

When the compressor is off, the compressor curve will appear but the meters will not be active.

■ EFFECT display area overview



① EFFECT type switches

Use this to select a preset effect to apply to the signals input through the inputs (①, ③, ⑩ and ⑰).

Options: RADIO, ECHO, MALE, FEMALE, CHOPPER, OFF

② ADJUST knob

Adjust the amount the sound is affected.

Turn it toward right increase the amount the sound is affected.

■ SOUND PAD trigger display area overview



① Trigger sound status

Drag and drop audio files to load them.

- When a **SOUND PAD** trigger pads (1/2/3) has an audio file loaded, the name of that file is shown in the trigger sound status area and it lights orange.
- When there is a problem with a loaded audio file, the name of that file is shown in the trigger sound status area but the area appears gray.
- When no audio file is loaded, the trigger sound status area appears gray.

② FADE IN knob

Sets the fade in time of the triggered sound.

Range: 0.00-5.0 s (default: 0.00 s)

③ LEVEL knob

Adjusts the volume of triggered sound.

Range: 0-100 (default: 60)

④ FADE OUT knob

Sets the fade out time of the triggered sound.

Range: 0.00-5.0 s (default: 0.00 s)

⑤ START TIME knob

Sets where playback of the triggered sound starts in the file.

Range: 0.0-5.0 s (default: 0.0 s)

⑥ REPEAT button

When a repeat button is on, the arrows light and the repeat function for the triggered sound is enabled.

Default: off

⑦ LATCH/UNLATCH button

This sets the **SOUND PAD** trigger pad mode.

LATCH: Press a **SOUND PAD** trigger pads once to start playback, and press it again to stop playback.

UNLATCH: Press and hold a **SOUND PAD** trigger pads to play the sound for as long as it is held down. Release the button to stop playback.

⑧ VELOCITY button

This sets the operation modes of the **SOUND PAD** trigger pads (1/2/3).

When on, **VELOCITY** lights and operation is as follows.

Default: off

On: The playback volume of the **SOUND PAD** sound is affected by how hard the **SOUND PAD** trigger pads (1/2/3) is pressed.

Off: The playback volume of the **SOUND PAD** sound is set by the **LEVEL** knob. It is not affected by how hard the **SOUND PAD** trigger pads (1/2/3) is pressed.

Driver settings for specific purposes (Windows only)

Purpose	ASIO driver set with DAW software or other application	Sound default device
Using a DAW or other application primarily for recording	MiNiSTUDIO US-32/42 ASIO*	Basic driver US-42*
Using a DAW or other application primarily for playback	MiNiSTUDIO US-32/42 Mixing Driver	MiNiSTUDIO US-32/42
Using primarily for live broadcast/karaoke		

* This might improve performance depending on the operating conditions.

NOTE

“Additional driver US-32/42” is compatible with major communication apps.

Creating podcasts (Windows only)

Podcasts may be recorded in multi-channel sessions by selectively assigning the various drivers to the appropriate DAW tracks. This allows for complete control over of individual audio streams during Post-Production Audio Editing.

NOTE

A DAW (Digital Audio Workstation) or other software that supports ASIO input is for multi-channel podcast recording.

1. Select "Podcast Multi-channel" from the Mode Presets in the MiNiSTUDIO Settings Panel.
2. Open your DAW and select "MiNiSTUDIO US-32/42 Mixing Driver" as the ASIO device.
3. Create new tracks and assign their inputs as follows.

DAW Track 1	Mixing Driver In1/In2	input from Mic 1/2
DAW Track 2	Mixing Driver In3/In4	output from "MiNiSTUDIO US-32/42" Windows driver
DAW Track 3	Mixing Driver In5/In6	output from "Additional US-32/42" Windows driver

NOTE

- Separate DAW Tracks may be created for Mixing Driver 1 (Mic 1) and Mixing Driver 2 (Mic 2)
- Tracks can be monitored as desired by enabling their monitoring functions in the DAW.

For example, when a mic is connected to the input of this unit and the Windows default device is set to "MiNiSTUDIO US-32/42", and the input/output device for ordinary Internet audio/video communication apps is set to "Additional driver", the following input sounds can be monitored if monitoring is enabled for each track.

DAW Track 1	Input from MiNiSTUDIO mic inputs
DAW Track 2	MiNiSTUDIO SOUND PAD playback and other PC sounds and Music
DAW Track 3	Call-in guest speech from popular audio/video conference call applications

NOTE

Voices from more than one simultaneous call-in guests will be combined on a single audio track.

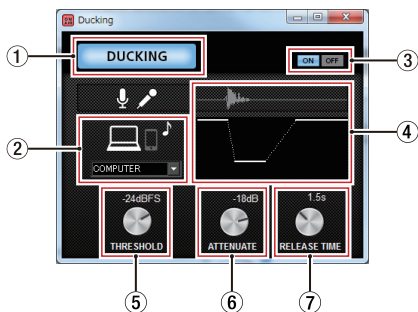
4. Record in the DAW.
5. Edit: Adjust audio balance, add effects, remove unwanted pauses or content, etc.

Using the ducking function

When a mic signal is input, this function can automatically lower the volume of background music or other sound that is playing back on the computer or input through the AUX jack on the front of the unit. Open the ducking setting screen from the “Extra Effects” menu at the top of the Settings Panel.

First, select the background music input source, and set the “THRESHOLD” knob.

Then, adjust the “ATTENUATE” and “RELEASE TIME” knobs as necessary.



① DUCKING indicator

This indicator appears lit within the ducking function is on.

② Ducked sound source

Select the source to be ducked.

Only AUX can be selected when using a Mac.

Options	Meaning
COMPUTER	Background music playing on the computer will be ducked.
AUX(default)	Background music playing from the AUX input will be ducked.
COMPUTER/AUX	Both sources will be ducked.

③ Ducking function ON/OFF buttons

These turn the ducking function on and off.

④ Effect illustration

This shows how the “ATTENUATE” and “RELEASE TIME” knob settings affect the ducking level.

⑤ THRESHOLD knob

Ducking is activated when the mic input exceeds this set level.

To use the ducking function when the mic input level is low, set this parameter to a low value (–30dBFS is the minimum).

Setting values: 0dBFS, –6dBFS, –9dBFS, –12dBFS, –15dBFS, –18dBFS(default), –21dBFS, –24dBFS, –27dBFS, –30dBFS

⑥ ATTENUATE knob

This sets the amount that the background music volume level will be reduced.

Setting values: 0dB, –3dB, –6dB, –9dB, –12dB(default), –18dB, –24dB, –27dB, –30dB

⑦ RELEASE TIME knob

This sets the amount of time until the background music volume returns to normal after the mic input goes below the “THRESHOLD” level.

Setting values: 0.1s, 0.5s, 1.0s, 1.2s, 1.5s, 1.8s, 2.0s(default), 2.5s, 3.0s, 3.5s, 4.0s, 4.5s, 5.0s

Notification function

Notifications will be shown if the computer being used is connected to the Internet when the Settings Panel is launched.

NOTE

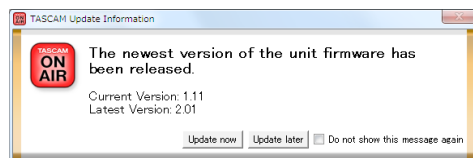
Put a check in the “Do not show the same message again” checkbox to prevent the same message from being shown the next time it is launched.

Automatic Settings Panel and firmware update function

If the computer you are using is connected to the Internet, when a new version of the Settings Panel or the firmware is released, a notification about automatic updating will appear when the Settings Panel is launched.



Settings Panel update notification



Firmware update notification

Click the “Update now” button if you want to use the latest version of the Settings Panel or firmware.

The file will be downloaded automatically in the update software will launch.

Click the “Update later” button to close the update window if you do not want to update or want to update later.

NOTE

- Put a check (✓) in the “Do not show the same message again” checkbox to prevent the same window from being shown the next time it is launched.
- After closing the update window, you can reopen it by selecting **Help** → **Update** from the menu.
- After updating the firmware, turn the unit on again.

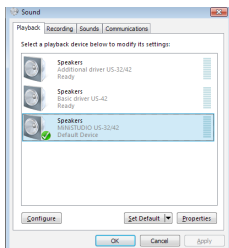
Application Guide

In this chapter, we explain how to set some audio applications for use with this unit.

Windows

1. Open the “**Sound**” screen using the procedures for the operating system being used (Windows 10 / Windows 8.1 / Windows 7).
2. On the Playback page, right-click “MiNiSTUDIO US-32/42”, and click “Set as Default Device” in the pop-up menu that appears.

When you do this, the green check mark (✓) appears next to the selected device.



Windows 8.1 screen

NOTE

- To use this unit as the recording device, open the Recording page and, use “Set as Default Device” in the same manner as on the Playback page.
 - “Additional driver US-32/42” is compatible with major communication apps. For most uses, “MiNiSTUDIO US-32/42” can be set as the default device without issue.
3. After completing the setting, click the OK button.
 4. Start an audio application, select an audio file and begin playback.

NOTE

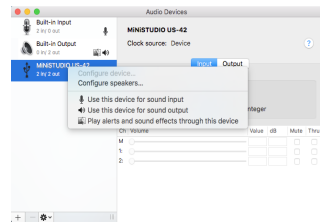
- If you change the setting while an audio application is running, the software will not recognize that the device has been changed. In this case, restart the application.

- If you still cannot hear sound after making the settings and completing the procedures above, disconnect the USB cable and restart the computer.
- If you make this setting, sound will be output through this unit, but no sound will be output by the computer’s speakers or headphones jacks.

macOS

1. Open the Utilities folder in the Applications folder, and double-click “Audio MIDI Setup”. Then open the “Audio Devices” window.
2. Click “MiNiSTUDIO US-42” to select it and right-click or control-click it. Then, click “Use this device for sound output” in the pop-up menu.

The speaker mark appears next to “MiNiSTUDIO US-42”.



NOTE

To use this device as the recording device, set “MiNiSTUDIO US-42” to “Use this device for sound input”.

3. Launch an audio application, select an audio file and start playback.

Troubleshooting

Please read this chapter if you are unable to use the unit properly even after setting it up following the procedures in this manual.

If you are still unable to resolve a problem, please contact the store where you purchased this unit or TASCAM customer support service with the following information about the operating environment and details about the trouble.

■ Operating environment

- Computer manufacturer:
- Model:
- CPU:
- Memory (RAM):
- Operating system:
- Applications used:
- Antivirus software:
- Wireless LAN use:

See the end of this document for contact information.

■ The dedicated software cannot be installed.

1. Check the operating system
The operating system you are using might not be supported by the software that you are trying to install. Check the operating systems supported by the software that you are trying to install.
2. Stop software that is running in the background
Antivirus software and other software running in the background can interfere with installation. Quit software running in the background and try installing again.

■ The unit is connected, but the computer does not recognize it.

1. Install the dedicated software
 - If you have not done so, install the dedicated software. See "Installing the dedicated software" on page 10 for details.
2. Change the USB port
 - This unit will not work with USB 1.1. Use a USB 2.0 or USB 3.0 port.
 - Do not use a USB hub. Always connect the unit directly to a USB port on the computer.
 - If the above steps do not resolve the problem, connect the unit to a different USB port on the computer.

■ There is no sound even though audio is playing back on the computer.

Windows

- See the "Windows" section of the "Application guide", and make settings as necessary for the OS.

Mac

1. Quit all applications and open "System Preferences..." from the Apple menu.
2. Open "Sound".
3. On the Output tab, select "MiNiSTUDIO US-42".

After completing the setting, restart the computer and check the sound of playback.

Depending on the application that you are using, you might need to make additional device settings. Please see the manuals for the applications that you are using for detailed setting procedures.

■ Sound breaks up or there is noise.

The processing load on the computer causes sound to break up and noise to occur.

Here are some methods to reduce the load on the computer.

1. A wireless LAN and software running in the background, including antivirus software, regularly put processing loads on the computer, which can cause sound to break up and other noise.
Stop wireless LAN transmission, antivirus software and other software running in the background when using this unit.
2. Set the buffer size (latency) in the audio application that you are using or in this unit's Settings Panel to a larger value. (Windows only)

NOTE

Consult the maker of the audio application that you are using for methods to reduce its load on your computer.

3. Change the settings of your computer so that they are optimal for audio processing.
Using Windows
 - ① Open "**System**" using the appropriate method for the OS you are using (Windows 10 / Windows 8.1 / Windows 7).
 - In Windows 10, open the "**Control Panel**". Then, click the "**System**" icon.
 - In Windows 8.1, right-click the ordinary Start screen (Metro user interface screen) and then click "All apps". Then, right-click "Computer" and select "Properties".
 - In Windows 7, from the Start button right-click "Computer" and select "Properties".
 - ② Click "Advanced system settings".
 - ③ Click "Settings" in the "Performance" section of the "Advanced" tab of the "System Properties" window.
 - ④ In the "Visual Effects" tab of the "Performance Options" window, select "Adjust for best performance".

Mac

- ① Open “System Preferences...” from the Apple menu, and select “Energy Saver”.
- ② Set “Computer sleep” to “Never”.
- ③ Set “Display sleep” to “Never”.

NOTE

Depending on the macOS version and Mac computer model, these settings might not be available.

4. Change the USB port

Since the unit might not properly function with some USB ports, try connecting it to a different USB port.

NOTE

- Try again after disconnecting other USB devices. (Keyboards and mice can be left connected.)
- Do not use a USB hub. Always connect the unit directly to a USB port on the computer (built-in)

Specifications

Ratings

- **Sampling frequencies**
44.1, 48, 88.2, 96 kHz
- **Quantization bit depth**
16/24-bit

Analog audio input ratings

■ Mic inputs (balanced, IN 1/IN 2)

Connectors:

XLR-3-31 (1: GND, 2: HOT, 3: COLD)

6.3mm (1/4") standard TRS stereo jacks (Tip: HOT, Ring: COLD, Sleeve: GND)

Input impedance: 2.4 k Ω

Nominal input level (**VOLUME** knob at **MAX**): -65 dBu (0.0004 Vrms)

Nominal input level (**VOLUME** knob at **MIN**): -20 dBu (0.0775 Vrms)

Gain range: 45 dB

■ Instrument inputs (unbalanced, IN 1/IN 2)

(when IN 1/IN 2 jack switch set to **INST**)

Connectors: 6.3mm (1/4") standard TS jacks (Tip: HOT, Sleeve: GND)

Input impedance: 1 M Ω or more

Gain range: 45 dB

■ External mic inputs (can provide plug-in power)

Connectors:

3.5mm (1/8") 4-pole mini jack

3.5mm (1/8") mini jack

Input impedance: 5 k Ω or more

Gain range: 45 dB

■ External input jack

Connector: 3.5mm (1/8") stereo mini jack

Input impedance: 5 k Ω or more

Maximum input level: +7.7 dBV (2.427 Vrms)

Analog audio output ratings

■ Line outputs (unbalanced, LINE OUT)

Connectors: RCA jacks

Output impedance: 200 Ω or more

Nominal output level: -10 dBV (0.316 Vrms)

Maximum output level: +6 dBV (1.995 Vrms)

■ Headphone output

Connectors:

Standard 6.3mm (1/4") stereo jack

3.5mm (1/8") 4-pole mini jack

3.5mm (1/8") stereo mini jack

Maximum output: 15 mW + 15 mW or higher (THD+N 0.1% or less, into 32 Ω load)

Control input/output ratings

■ USB

Connector: 4-pin USB B-type
Transfer rate: USB 2.0 High Speed (480 Mbps)

■ DC IN 5V

Connector: USB Micro B type

Audio performance

■ Mic amp EIN (equivalent input noise)

–120 dBu or less (150Ω termination, **VOLUME** knob at **MAX**)

■ Frequency response

IN 1/IN 2 → **LINE OUT**/headphones output
(standard 6.3mm (1/4") stereo jack)

At 44.1/48 kHz

20 Hz: 0 dB/–1 dB (JEITA)

20 kHz: 0 dB/–1 dB (JEITA)

20 kHz: 0 dB/–3 dB (headphones output,
JEITA)

At 88.2/96 kHz

20 Hz: 0 dB/–1 dB (JEITA)

40 kHz: 0 dB/–1 dB (JEITA)

40 kHz: 0 dB/–3 dB (headphones output,
JEITA)

■ S/N ratio

100 dB or higher (**IN 1/IN 2** → **LINE OUT**,
VOLUME knob at **MIN**, JEITA)

■ Distortion

0.005 % or less (**IN 1/IN 2** → **LINE OUT**, 1kHz
sine wave, at nominal input level and maximum
output level, JEITA)

■ Crosstalk

95 dB or more (**IN 1/IN 2** → **LINE OUT**, 1kHz
sine wave, JEITA)

Operation requirements

Check the TEAC Global Site (<https://teac-global.com/>)
for the latest information about supported operating
systems.

Windows

■ Supported operating systems

Windows 10 32-bit

Windows 10 64-bit

Windows 8.1 32-bit

Windows 8.1 64-bit

Windows 7*

Windows 7 32-bit SP1 or later

Windows 7 64-bit SP1 or later

* Operation has been confirmed with the final
version of Windows 7.

■ Computer hardware requirements

Windows computer with a USB 2.0 (or higher) port

■ CPU/processor speed

2 GHz or faster dual core processor (x86)

■ Memory

2 GB or more

CAUTION

Operation of this unit was confirmed using
standard computers that meet the above require-
ments. This does not guarantee operation with
all computers that meet the above requirements.
Even computers that meet the same system
requirements might have processing capabilities
that differ according to their settings and other
operating conditions

Mac

■ Supported operating systems

macOS Catalina (10.15 or later)

macOS Mojave (10.14 or later)

macOS High Sierra (10.13 or later)

■ Computer hardware requirements

Mac with a USB 2.0 (or higher) port

■ CPU/processor speed

2 GHz or faster dual core processor

■ Memory

2 GB or more

iOS device

Operation has been confirmed with Apple devices
running the following iOS versions.

- iPadOS13 / iOS13 / iOS12 / iOS11

CAUTION

To connect an iOS device that has a Lightning
connector, a genuine Apple Lightning to USB
Camera Adapter (sold separately) is necessary.

Supported audio drivers

Windows: ASIO 2.0, WDM

Mac: Core Audio

iOS device: Core Audio

General

■ Power

When using a computer

USB bus power

When using an iOS device

USB power adapter (that can supply 5 V and a current of at least 700 mA)¹

External battery pack (that can supply 5 V and a current of at least 700 mA)²

¹We strongly recommend using the USB power adapter included with the iPad/iPhone. No USB power adapter is included with an iPod touch. To use it with an iPod touch, purchase a genuine Apple USB power adapter (that can supply 5 V and a current of at least 700 mA) separately.

²We strongly recommend using a TASCAM BP-6AA external battery pack. If using another external battery pack or mobile battery, purchase one that can supply 5 V and a current of at least 700 mA.

■ Power consumption

1.5 W

■ External dimensions

200 × 40 × 130 mm

(width × height × depth, excluding protrusions)

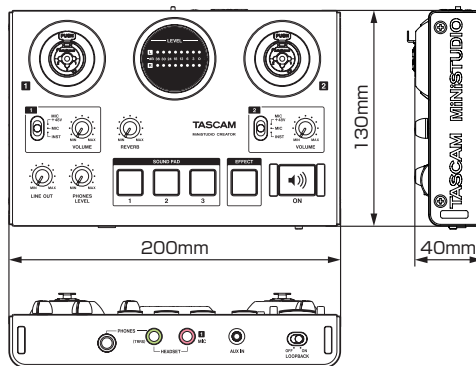
■ Weight

500 g

■ Operating temperature range

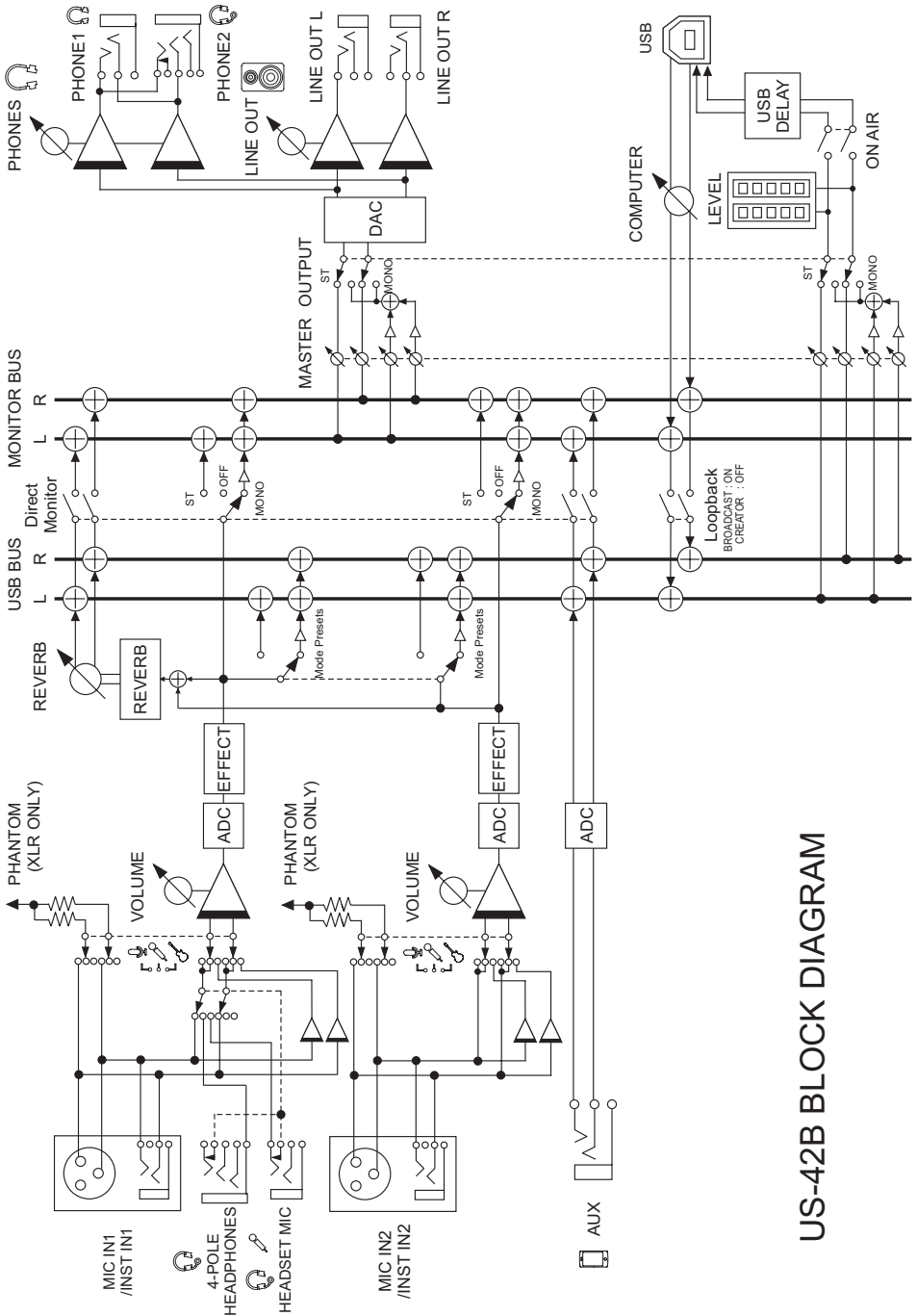
5–35 °C

Dimensional drawings



- Illustrations in this manual might differ in part from the actual product.
- Specifications and external appearance might be changed without notification to improve the product.

Block diagrams



US-42B BLOCK DIAGRAM



WARRANTY

< In the United States >

This warranty gives you specific legal rights and you may also have other rights which vary from state to state. This warranty is only valid within the country the unit was originally purchased.

WHAT IS COVERED AND WHAT IS NOT COVERED

Except as specified below, this warranty covers all defects in materials and workmanship in this product. The following are not covered by the warranty:

1. **Damage to or deterioration of the external cabinet.**
2. **Damage resulting from accident, misuse, abuse or neglect.**
3. **Damage resulting from failure to perform basic daily maintenance and/or calibration or otherwise resulting from failure to follow instructions contained in your owner's manual.**
4. **Damage occurring during shipment of the product. (Claims must be presented to the carrier)**
5. **Damage resulting from repair or attempted repair by anyone other than TEAC or an authorized TASCAM service station.**
6. **Damage resulting from causes other than product defects, including lack of technical skill, competence, or experience of the user.**
7. **Damage to any unit which has been altered or on which the serial number has been defaced, modified or is missing.**

WHO IS COVERED UNDER THE WARRANTY

This warranty may be enforced only by the original purchaser. This warranty is not valid if the product was purchased through an unauthorized dealer.

LENGTH OF WARRANTY

All parts except heads and disk drives are warranted for one (1) year from the date of original purchase. Heads and disk drives are warranted for ninety (90) days from date of original purchase. Labor is warranted for ninety (90) days from date of original purchase.

WHAT WE WILL PAY FOR

We will pay all labor and material expenses for items covered by the warranty. Payment of shipping charges is discussed in the next section of this warranty.

HOW YOU CAN GET WARRANTY SERVICE

Your unit must be serviced by an authorized TASCAM service station in the United States. (This warranty is not enforceable outside the U.S.) If you are unable to locate an authorized TASCAM service station in your area, please contact us. We either will refer you to an authorized service station or instruct you to return the unit to the factory. Whenever warranty service is required, you must present a copy of the original dated sales receipt from an Authorized TASCAM Dealer. You must pay any shipping charges if it is necessary to ship the product to service. However, if the necessary repairs are covered by the warranty, we will pay return surface shipping charges to any destination within the United States.

LIMITATION OF IMPLIED WARRANTIES

Any implied warranties, INCLUDING WARRANTIES OF MERCHANTABILITY AND FITNESS FOR A PARTICULAR PURPOSE, are limited in duration to the length of this warranty.

EXCLUSION OF DAMAGES

TEAC's liability for any defective product is limited to repair or replacement of the product, at TEAC's option. TEAC shall not be liable for:

1. **Damages based upon inconvenience, loss of use of the product, loss of time interrupted operation or commercial loss; or**
2. **Any other damages, whether incidental, consequential or otherwise.**

Some states do not allow limitations on how long an implied warranty lasts and/or do not allow the exclusion or limitation of incidental or consequential damages, so the above limitations and exclusions may not apply to you.

To locate an Authorized Service Center in Your Area

CALL 1-323-726-0303

< Europe >

This product is subject to the legal warranty regulations of the country of purchase. In case of a defect or a problem, please contact the dealer where you bought the product.

Ce produit est sujet aux réglementations concernant la garantie légale dans le pays d'achat. En cas de défaut ou de problème, veuillez contacter le revendeur chez qui vous avez acheté le produit.

Dieses Gerät unterliegt den gesetzlichen Gewährleistungsbestimmungen des Landes, in dem es erworben wurde. Bitte wenden Sie sich im Gewährleistungsfall an den Händler, bei dem sie das Gerät erworben haben.

Questo apparecchio è conforme alle norme sulla garanzia vigenti nel rispettivo Paese in cui esso è stato acquistato. Si prega di rivolgersi al proprio commerciante, presso il quale è stato acquistato l'apparecchio, nel caso in cui si voglia richiedere una prestazione in garanzia.

Las condiciones de garantía de este aparato están sujetas a las disposiciones legales sobre garantía del país en el que ha sido adquirido. En caso de garantía, debe dirigirse al establecimiento donde adquirió el aparato.

< In other countries/areas >

This warranty gives you specific legal rights, and you may also have other rights that vary by country, state or province.

If you have a warranty claim or request, please contact the dealer where you bought the product.

该保证书赋予了顾客特定的合法权利，并且因国家、州或省等地域的不同，顾客可能拥有其他权利。如需申请或要求保修，请与购买本产品的销售店进行联系。

If you require repair services for your TASCAM equipment, please contact the dealer where the product was purchased from or the TASCAM Distributor in your country. A list of TASCAM Distributors can be found on our website at: <https://teac-global.com/>



TEAC CORPORATION

Phone: +81-42-356-9143
1-47 Ochiai, Tama-shi, Tokyo 206-8530 Japan

<https://tascam.jp/jp/>

TEAC AMERICA, INC.

Phone: +1-323-726-0303
10410 Pioneer Blvd. Suite #1, Santa Fe Springs, California 90670, U.S.A.

<https://tascam.com/us/>

TEAC UK Ltd.

Phone: +44-1923-797205
Luminous House, 300 South Row, Milton Keynes, Buckinghamshire, MK9 2FR, UK

<https://www.tascam.eu/en/>

TEAC EUROPE GmbH

Phone: +49-611-71580
Bahnstrasse 12, 65205 Wiesbaden-Erbenheim, Germany

<https://www.tascam.eu/de/>

TEAC SALES & TRADING(SHENZHEN) CO., LTD

Phone: +86-755-88311561~2
Room 817, Xinian Center A, Tairan Nine Road West, Shennan Road, Futian District, Shenzhen, Guangdong Province 518040, China

<https://tascam.cn/cn/>

WARRANTY

**Model/Modèle/Modell
Modello/Modelo/ 型号**

US-42B

**Owner's name/Nom du propriétaire/Name
des Eigentümers
Nome del proprietario/Nombre del
propietario/ 顾客姓名**

**Serial No./No de Série/Seriennummer
Numero di serie/Número de serie/ 序列号**

**Address/Adresse/Adresse
Indirizzo/Dirección/ 顾客地址**

**Date of purchase/Date de l'achat/Date des
Kaufs
Data dell'acquisto/Fecha de compra/ 购买日期**

**Dealer's name/Nom du détaillant/Name des
Händler
Nome del commerciante/Nombre del
establecimiento/ 销售店名**

TASCAM

<https://teac-global.com/>

**Dealer's address/Adresse du détaillant/
Adresse des Händlers
Indirizzo del commerciante/Dirección del
establecimiento/ 销售店地址**

