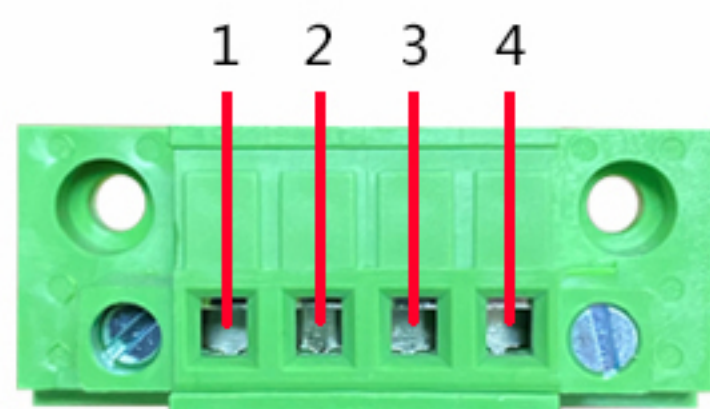


PRODUCT DESCRIPTION

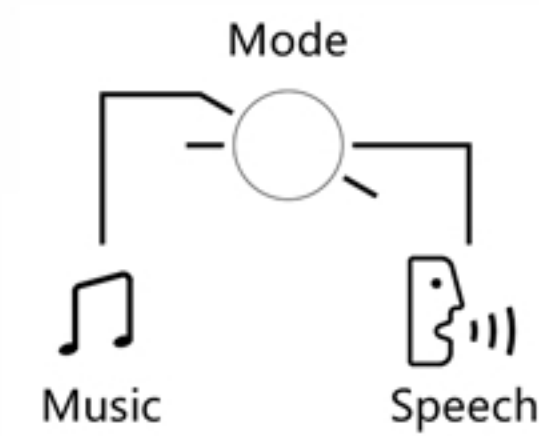
CONNECTION METHOD



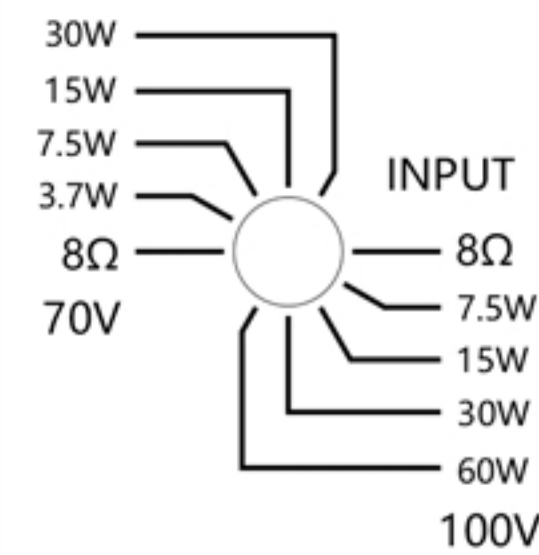
Ohm plug connection method:  
Connect the positive pole to 1+,  
Connect the negative pole to 1-,  
2+ and 2- are not wired.



Euroblock:  
Connect the positive pole to 3 or 4,  
and the negative pole to 1 or 2.



EQ mode selection knob:  
Choose between language mode and music mode.



Input mode selector knob:  
Three input modes: 8Ω/100V/70V;  
100V/70V input has 4 additional output power levels  
to choose from;  
(Warning: When using an amplifier with a 100V/70V  
constant voltage output, do not set the knob to the  
8Ω position, otherwise there is a high probability of  
damaging the speaker.)



BEFORE THE START

The professional wall mount bracket is simple in shape and compact in structure, which can give full play to the effect of the speaker. This stand is very different from traditional stands, so be sure to read this instruction manual, which will help you build and use your stand.

OPEN THE CARTON

Please open the speaker carton carefully, check and keep all the packaging, materials and accessories for future use.

WARN

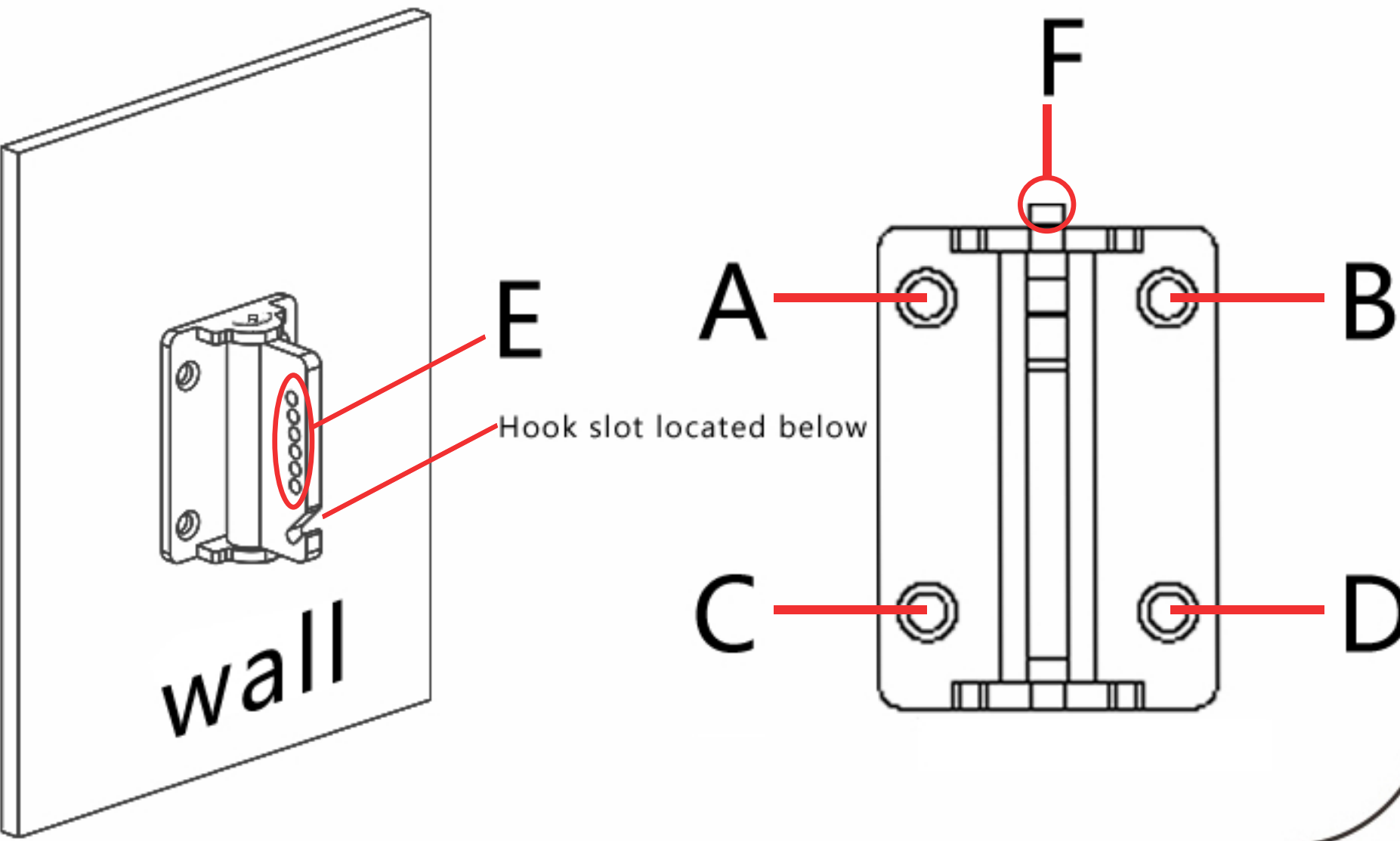
Plastic bags can pose a choking hazard, keep them away from babies or children. It is prohibited to hang sound columns on walls that cannot bear the load (such as hollow bricks, etc.), otherwise there may be a risk of the sound columns falling off.

DAILY MAINTENANCE

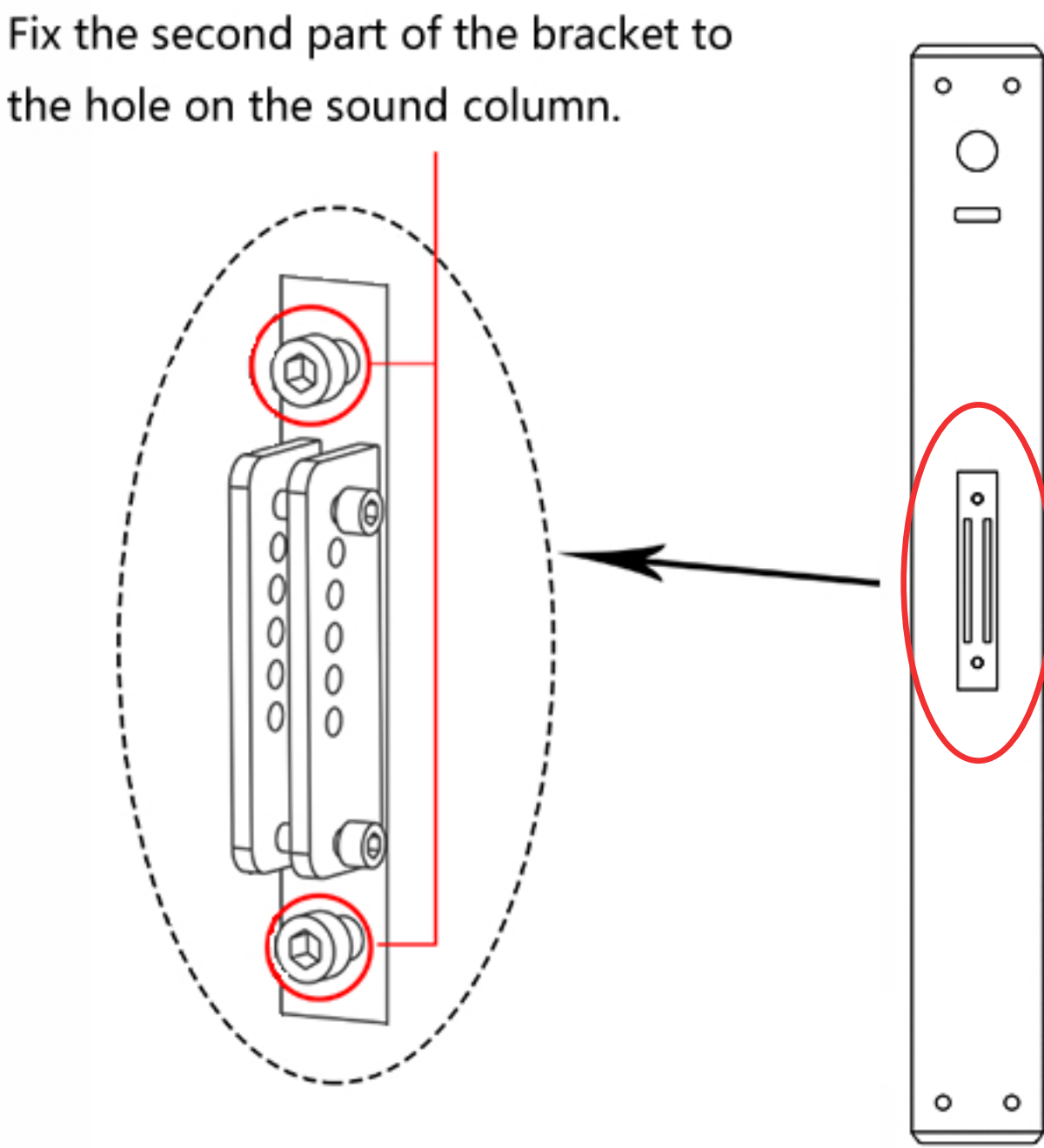
During the use of the product, please check whether the wall structure or screws are loose from time to time, and reinforce them in time to prevent the risk of falling.

INSTALLATION STEPS

- 1. Use four screws A, B, C, and D to fix the bracket component 1 to the wall. Pay attention to the position and direction of the hook groove.
- 2. Loosen the screw at F to adjust the left and right angles.
- 3. The hole position at E can adjust the up and down angle.



- 4. Assemble the bracket part 2 to the two bracket mounting holes on the back of the sound column. Pay attention to the direction of the bracket. The angle adjustment holes should be at the top.



- 5. First put the assembled bracket under the second Hook the screws to the hook grooves on the first bracket, then align the angle adjustment holes above the two brackets according to the required angle, lock the screws, and the assembly is completed.

