

X15 HiQ PRELIMINARY



REFERENCE STAGE MONITOR



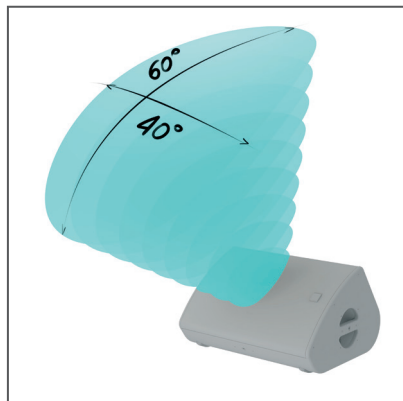
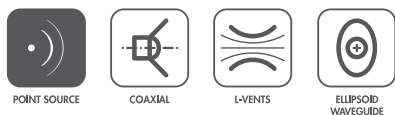
In the L-Acoustics coaxial X series, the X15 HiQ is the reference active stage monitor. It operates from 55 Hz to 20 kHz.

The X15 HiQ features a 3" diaphragm compression driver coaxially-loaded by a 15" low frequency transducer in a bass-reflex enclosure with laminar vents.

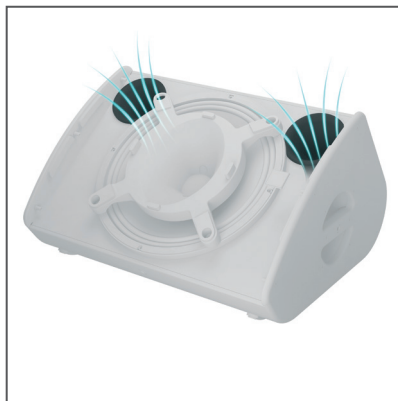
The coaxial transducer arrangement and its ellipsoid waveguide produces a 40° x 60° directivity pattern with a smooth tonal response free of secondary lobes over the entire frequency range. As a result, X15 HiQ boasts an exceptional immunity to feedback in stage monitoring situations.

The X15 HiQ provides a stage monitoring angle setting of 35° with regard to vertical or 55° thanks to its built-in risers. With a cabinet combining the properties of birch and beech plywood, X15 HiQ low weight and elegance makes for an easy integration into the set. Ergonomic handles for a solid grip and efficient handling. For special narrow fill applications, the X15 HiQ can be pole-mounted using the integrated socket or flown and tilted in various orientations using its rigging accessories.

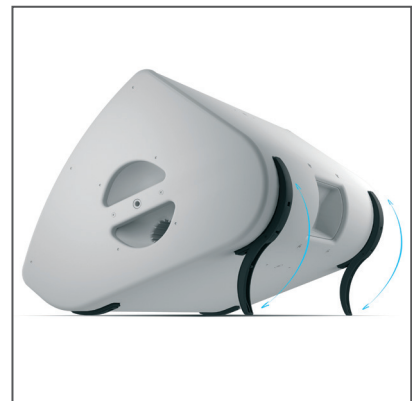
The amplified controllers ensure the advanced crossover functions, time alignment, linearization and L-Drive protection of the transducers.



► The ellipsoid waveguide generates a tight H/V directivity pattern of 40° x 60° optimal for stage monitoring applications.



► The L-Vents laminar vented ports reduce turbulence and port noise at high levels, increasing LF efficiency.



► Built-in risers offer two stage angles: 35° or 55° with regard to vertical to accommodate short or long throw stage monitoring applications.

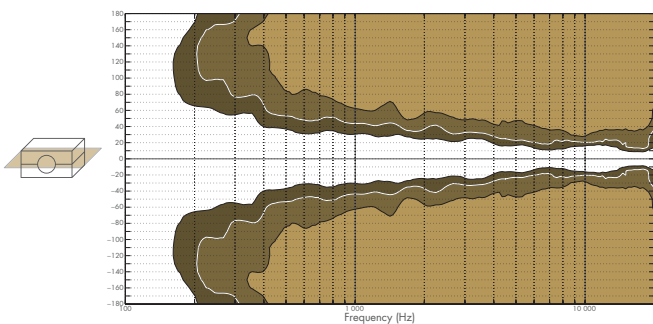
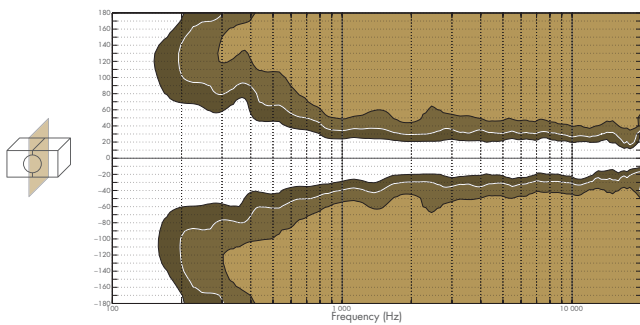
SPECIFICATIONS

Description	Active 2-way coaxial enclosure, controlled and amplified by LA4X / LA8
Usable bandwidth (-10 dB)	55 Hz - 20 kHz ([X15])
Maximum SPL¹	136 dB ([X15])
Nominal directivity	Vertical: 60° Horizontal: 40°
Monitoring angle²	35° without risers 55° with risers
Transducers	LF: 1 × 15" neodymium, bass-reflex, laminar vents HF: 1 × 3" compression driver neodymium, ellipsoid waveguide
Nominal impedance	LF: 8 Ω HF: 8 Ω
Connectors	IN: SpeakON® LINK: SpeakON®
Rigging and handling	2 × handles DIN580-compatible M8 threaded insert 4 × M10 threaded inserts 2 × 35 mm pole sockets
Weight (net)	21 kg / 46.2 lb
Cabinet	First grade Baltic birch and beech plywood
Finish	Dark Grey brown PANTONE 426C Pure white RAL 9010 Custom RAL code on special order
IP	IP43

1 Peak level at 1 m under free field conditions using 10 dB crest factor pink noise with specified preset.

2 With regard to vertical.

BEAMWIDTH



- ▶ Dispersion angle diagram of a single X15 HiQ in vertical (top) and horizontal (bottom) plane using lines of equal sound pressure at -3dB, -6dB, -12 dB.

DIMENSIONS

